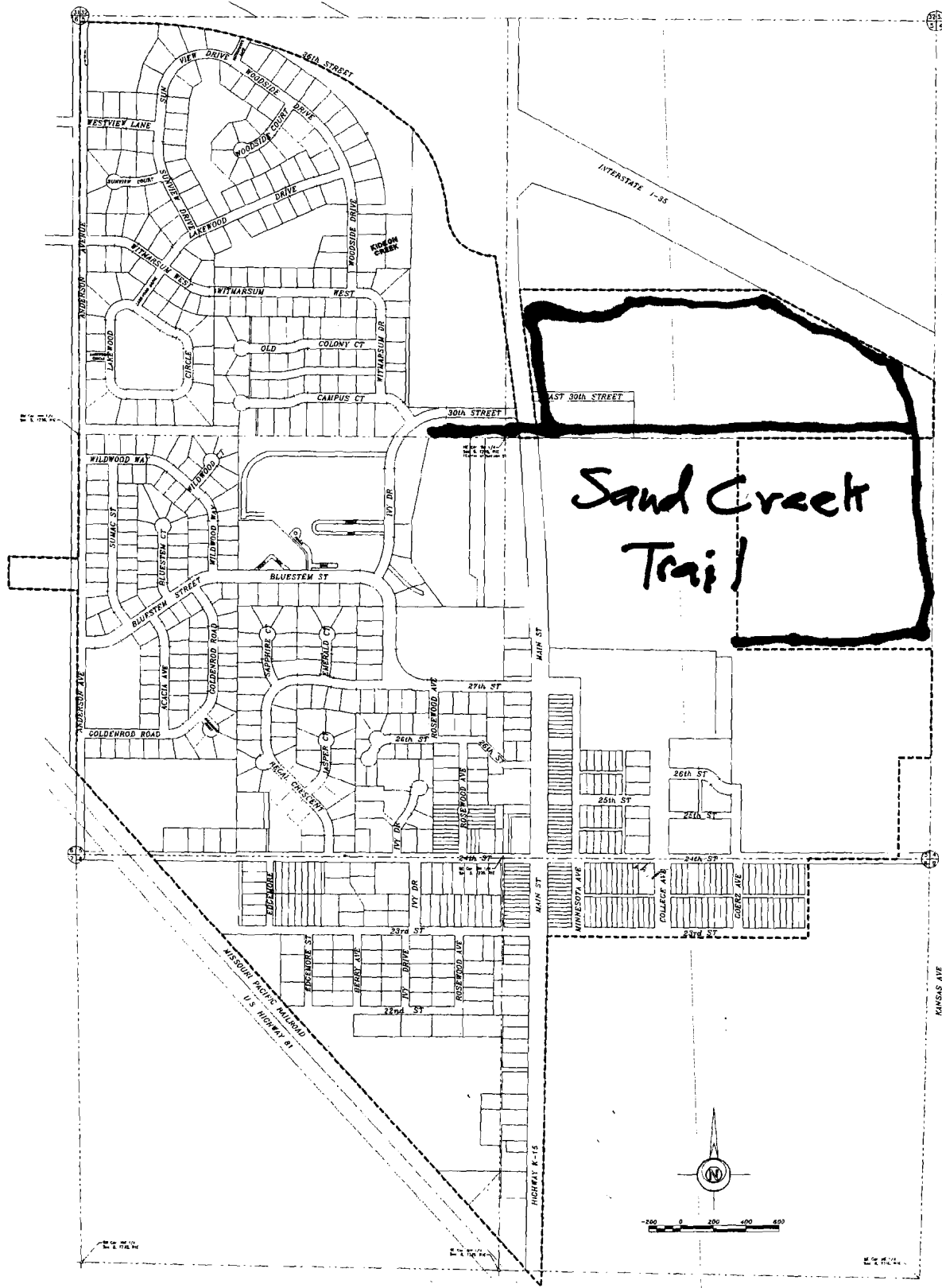


CITY OF NORTH NEWTON

HARVEY COUNTY, KANSAS



Sand Creek Trail

- LEGEND**
- 1. City Boundary
 - 2. Major Street
 - 3. Minor Street
 - 4. Alley
 - 5. Utility Line
 - 6. Fire Hydrant
 - 7. Sewer Manhole
 - 8. Water Manhole
 - 9. Storm Sewer Manhole
 - 10. Electric Pole
 - 11. Telephone Pole
 - 12. Gas Pole
 - 13. Street Light
 - 14. Fire Station
 - 15. Police Station
 - 16. City Building
 - 17. Public Building
 - 18. School Building
 - 19. Church Building
 - 20. Cemetery
 - 21. Cemetery
 - 22. Cemetery
 - 23. Cemetery
 - 24. Cemetery
 - 25. Cemetery
 - 26. Cemetery
 - 27. Cemetery
 - 28. Cemetery
 - 29. Cemetery
 - 30. Cemetery
 - 31. Cemetery
 - 32. Cemetery
 - 33. Cemetery
 - 34. Cemetery
 - 35. Cemetery
 - 36. Cemetery
 - 37. Cemetery
 - 38. Cemetery
 - 39. Cemetery
 - 40. Cemetery
 - 41. Cemetery
 - 42. Cemetery
 - 43. Cemetery
 - 44. Cemetery
 - 45. Cemetery
 - 46. Cemetery
 - 47. Cemetery
 - 48. Cemetery
 - 49. Cemetery
 - 50. Cemetery

CITY OF NORTH NEWTON	CITY MAP
BSS	EastStar Surveying Service, P.C.
402 Main St., Newton, Kansas 67450 Phone: 620.833.7417 • Fax: 620.833.7407	1114 Broadway, Suite 100 Newton, Kansas 67450 Phone: 620.833.7417 • Fax: 620.833.7407
Printed by: BSS	Date of Field Work: 1/20/09
Checked by: BSS	Date: 1/21/09
Drawn by: BSS	Drawn by: J. J. [Name]
Sheet: 1/21/09	Sheet: 1/21/09